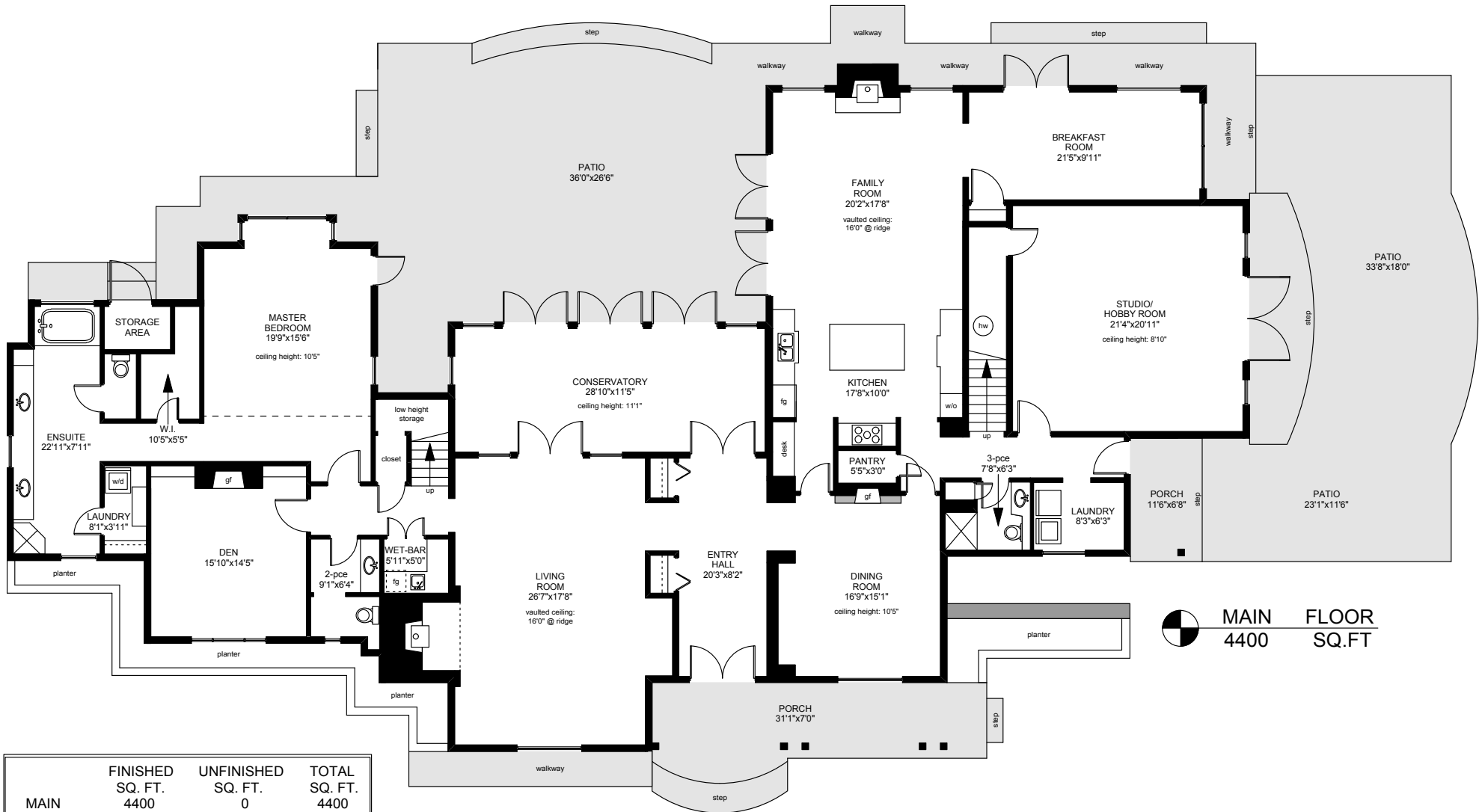
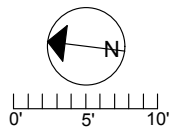


202 SEYMOUR HEIGHTS ROAD



MAIN FLOOR
4400 SQ.FT

	FINISHED SQ. FT.	UNFINISHED SQ. FT.	TOTAL SQ. FT.
MAIN	4400	0	4400
UPPER	1549	0	1549
TOTAL	5949	0	5949
PATIOS	0	2378	2378
PORCHES	0	295	295
BARN:			
MAIN	0	899	899
LOFT	0	462	462
TOTAL	0	1361	1361
STABLE	0	338	338
SHED	0	117	117



PREPARED FOR THE EXCLUSIVE USE OF
CHRIS & DARLENE HOBBS OF
SOTHEBY'S INTERNATIONAL REALTY CANADA

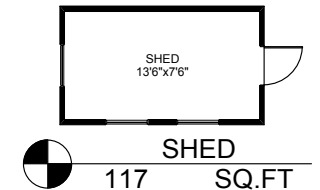
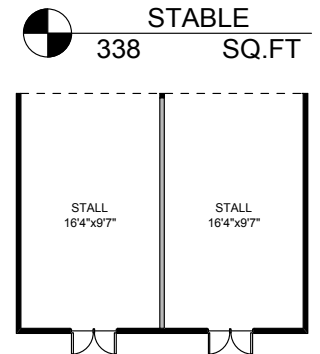
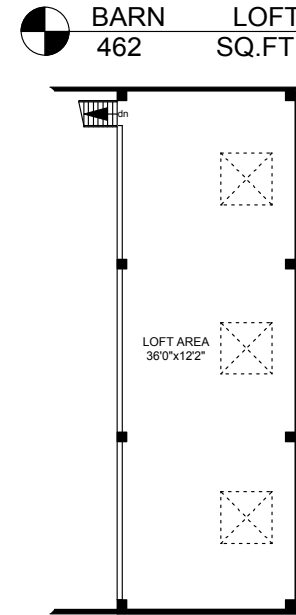
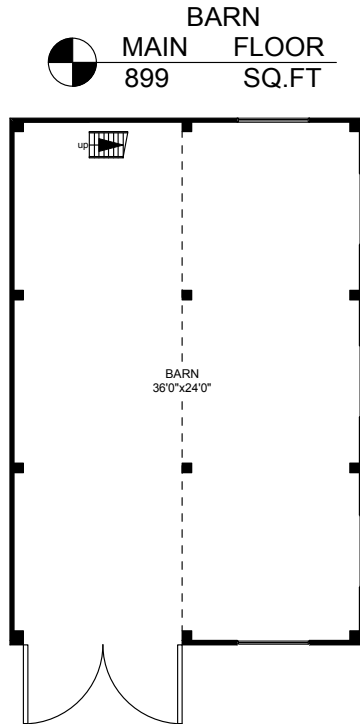
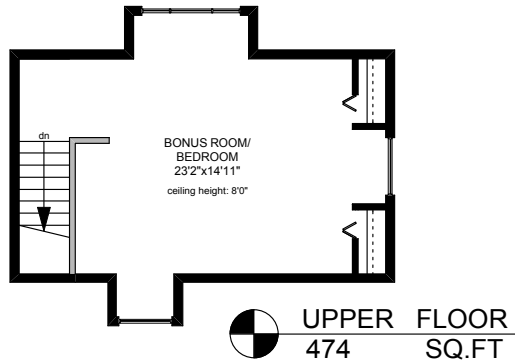
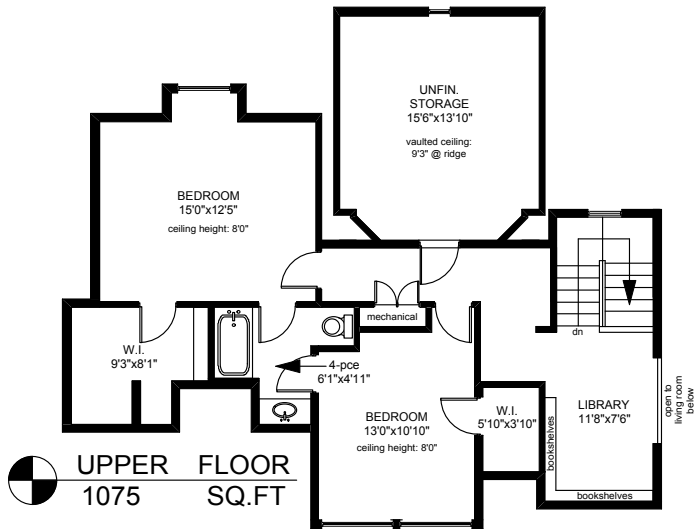
MEASURED ON: 06/10/13
DRAWING FILE: 11220

Taf Measure Ph. 883.8894
www.tafemeasure.com

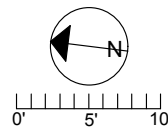
VICTORIA, B.C.

NOTE: This floor plan is provided by Chris & Darlene Hobbs of Sotheby's International Realty Canada as a convenient reference only, and is not to be relied upon as accurate. Prospective Buyers must satisfy themselves not only of the actual measurements, but also to the status of any finished space shown on this floor plan, specifically in relation to minimum ceiling height for habitable rooms required by the BC Building Code, allowable finished floor area in relation to current zoning, and determination if space was developed with necessary municipal permits.

202 SEYMOUR HEIGHTS ROAD



	FINISHED SQ. FT.	UNFINISHED SQ. FT.	TOTAL SQ. FT.
MAIN	4400	0	4400
UPPER	1549	0	1549
TOTAL	5949	0	5949
PATIOS	0	2378	2378
PORCHES	0	295	295
BARN:			
MAIN	0	899	899
LOFT	0	462	462
TOTAL	0	1361	1361
STABLE	0	338	338
SHED	0	117	117



PREPARED FOR THE EXCLUSIVE USE OF
CHRIS & DARLENE HOBBS OF
SOTHEY'S INTERNATIONAL REALTY CANADA

MEASURED ON: 06/10/13
DRAWING FILE: 11220

Taf Measure Ph. 883.8894
www.tafemeasure.com

VICTORIA, B.C.

NOTE: This floor plan is provided by Chris & Darlene Hobbs of Sotheby's International Realty Canada as a convenient reference only, and is not to be relied upon as accurate. Prospective Buyers must satisfy themselves not only of the actual measurements, but also to the status of any finished space shown on this floor plan, specifically in relation to minimum ceiling height for habitable rooms required by the BC Building Code, allowable finished floor area in relation to current zoning, and determination if space was developed with necessary municipal permits.