

JASON SOPROVICH

EXCELLENCE IN THE LUXURY HOME MARKET



SPECTACULAR FAMILY RESIDENCE IN WEST BAY
WITH STUNNING OCEAN VIEWS!

3190 THOMPSON PLACE, WEST VANCOUVER



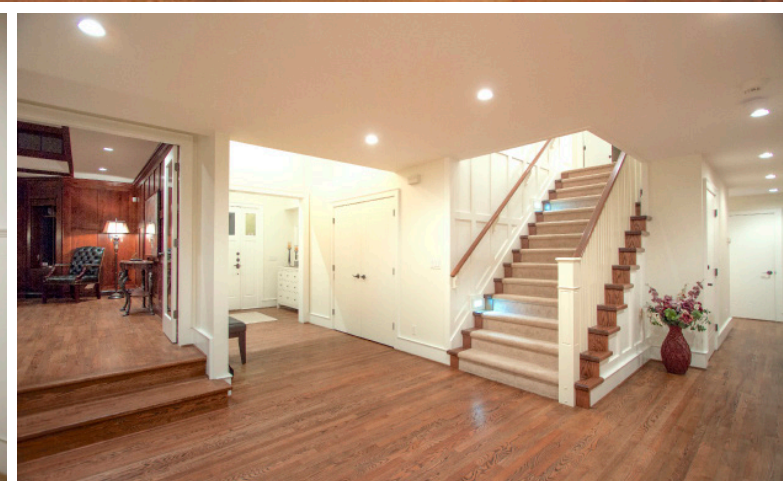
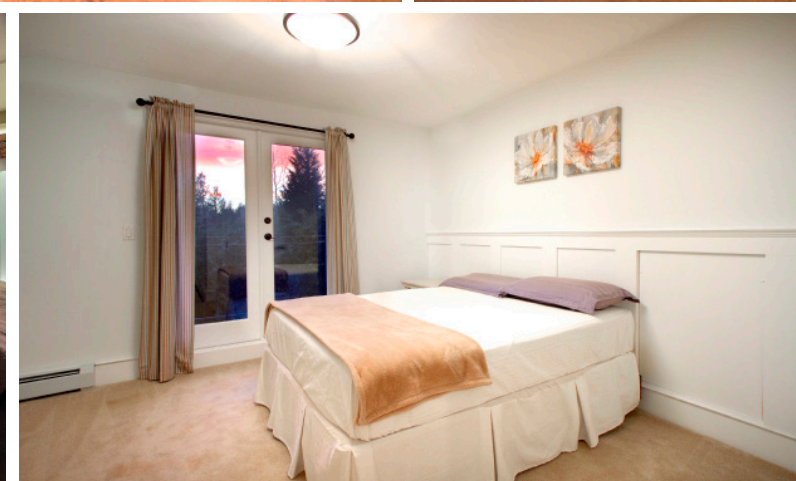
SPECTACULAR FAMILY RESIDENCE IN WEST BAY WITH STUNNING OCEAN VIEWS!

A beautifully re-built (2007) family home situated in West Vancouver's most sought after location - West Bay! Situated on a gorgeous, south-facing 16,500 sq. ft. private estate, offering panoramic ocean views and approximately 6,100 sq. ft. of spacious living on 3 levels.

Exquisitely finished, the home features a wonderful spacious floorplan with an open living and dining area with roaring fireplace and wet bar, a private study with traditional fireplace, custom paneled walls and built-in cabinetry, a gourmet chef's kitchen with top-of-the-line stainless steel appliances and centre island, and a separate eating area opening to a sun-filled veranda overlooking the manicured gardens and breathtaking ocean views.

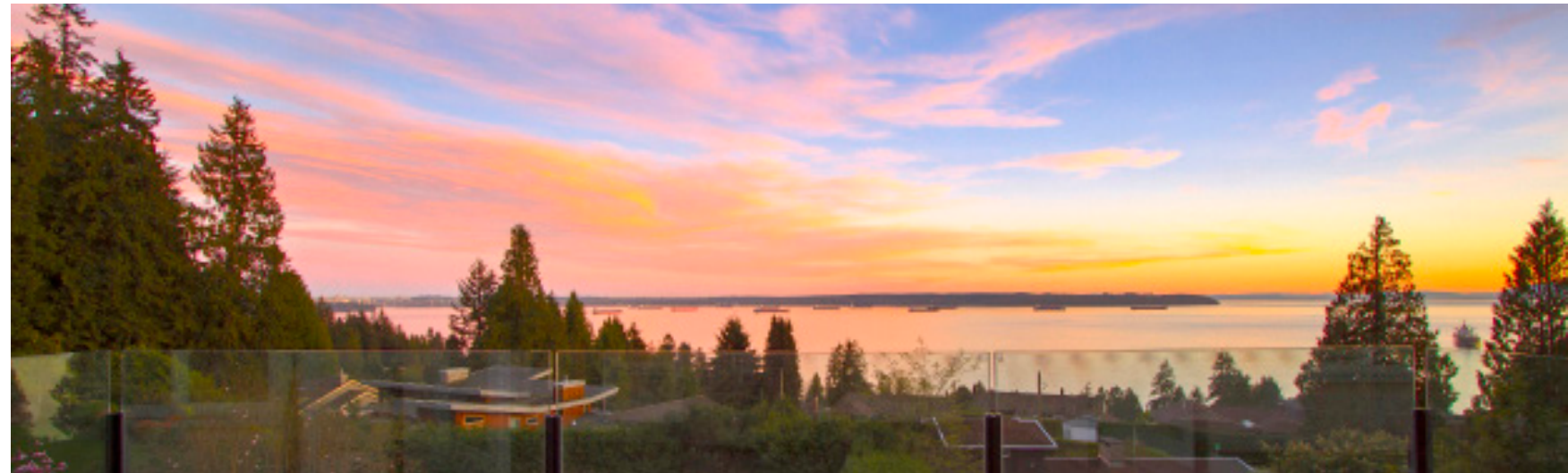
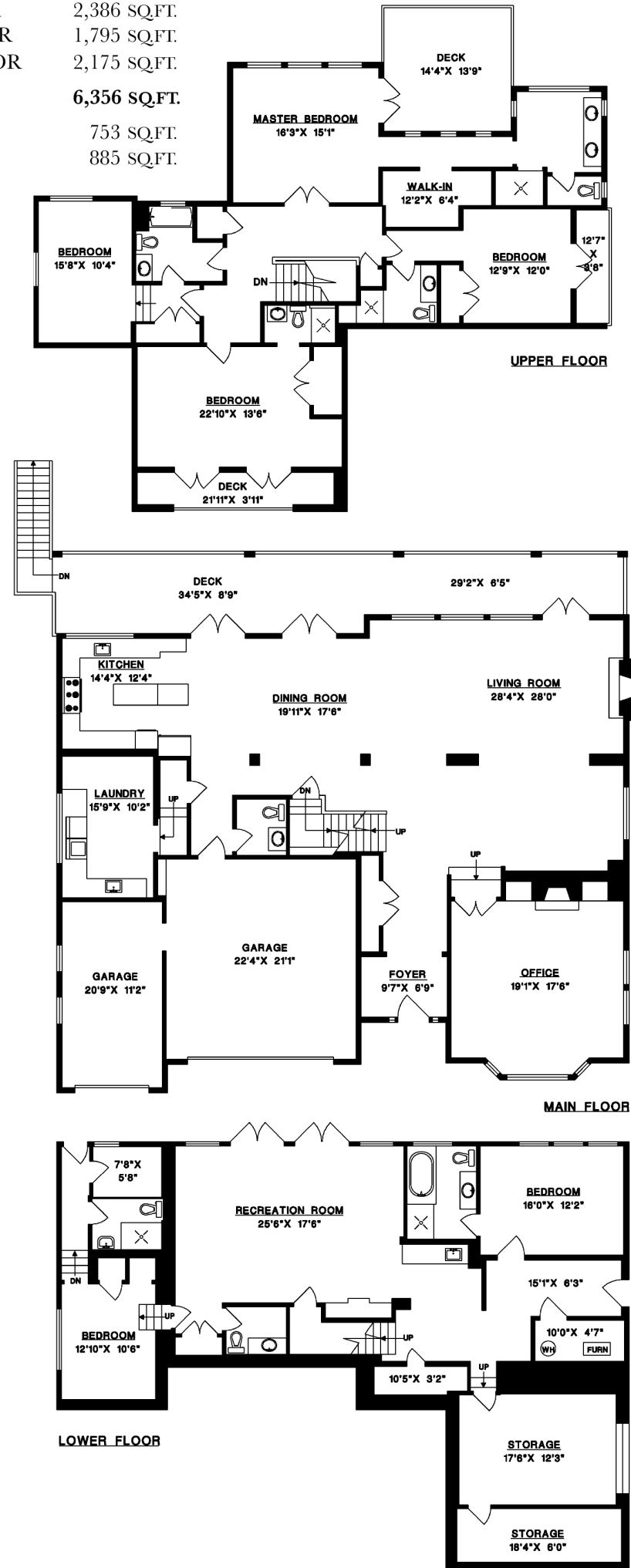
This fabulous home offers 5 full bedrooms with private bathrooms including a gorgeous master suite with large walk in dressing room and sensational ensuite, solid oak flooring throughout, extensive use of granite and many custom built-ins, millwork, wainscoting as well as stone detail throughout the entire home. On the lower level a fully equipped media/theatre room with wet bar, games room and separate sitting area, large covered decks, 3 car garage all opening out to a gorgeous sparkling outdoor pool and hot tub.

Minutes to all amenities, this private estate is wonderfully convenient and exquisitely appointed. A gorgeous family residence!



3190 THOMPSON PLACE
WEST VANCOUVER

MAIN FLOOR 2,386 SQ.FT.
UPPER FLOOR 1,795 SQ.FT.
LOWER FLOOR 2,175 SQ.FT.
TOTAL 6,356 SQ.FT.
GARAGES 753 SQ.FT.
DECKS 885 SQ.FT.





JASON SOPROVICH

EXCELLENCE IN THE LUXURY HOME MARKET

604.817.8812
soprovich.com

ROYAL LEPAGE | **Sussex**

Jason Soprovich