

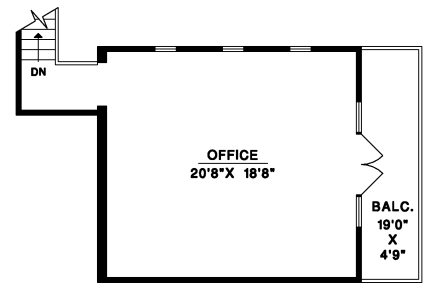


JASON SOPROVICH
 EXCELLENCE IN THE LUXURY HOME MARKET
 604.817.8812
 Prudential International

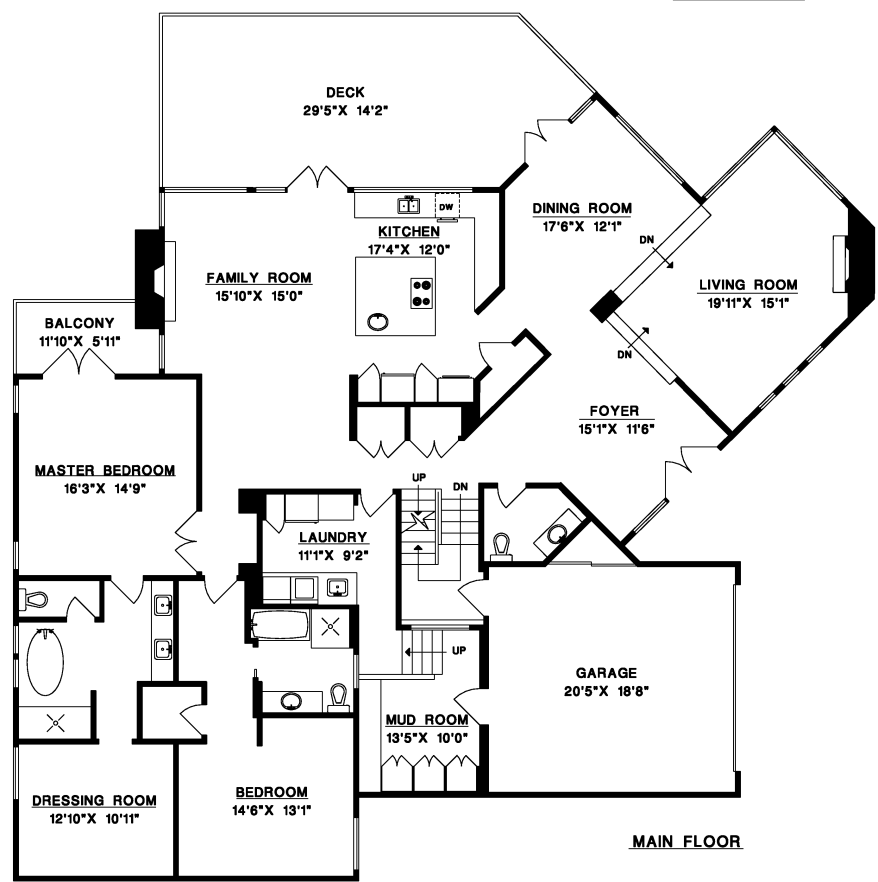
**450 HAYES STREET
 WEST VANCOUVER**

MAIN FLOOR	2,806 SQ.FT.
UPPER FLOOR	472 SQ.FT.
LOWER FLOOR	1,795 SQ.FT.
TOTAL	5,073 SQ.FT.

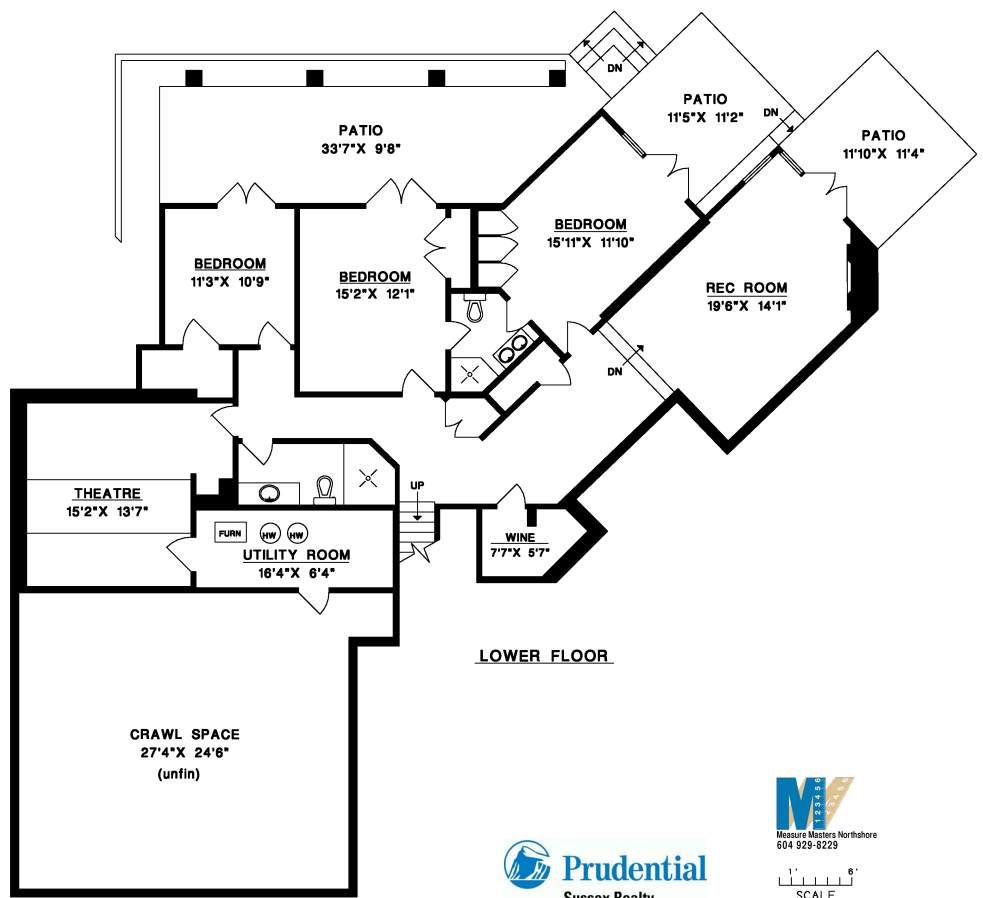
CRAWL SPACE	737 SQ.FT.
GARAGE	429 SQ.FT.
DECK	469 SQ.FT.
BALCONIES	168 SQ.FT.
PATIOS	737 SQ.FT.



UPPER FLOOR



MAIN FLOOR



LOWER FLOOR

