

JASON SOPROVICH

EXCELLENCE IN THE LUXURY HOME MARKET



SENSATIONAL FAMILY RESIDENCE IN WEST BAY
WITH GORGEOUS OCEAN VIEWS
3395 THOMPSON CRESCENT, WEST VANCOUVER



SENSATIONAL FAMILY RESIDENCE IN WEST BAY WITH GORGEOUS OCEAN VIEWS

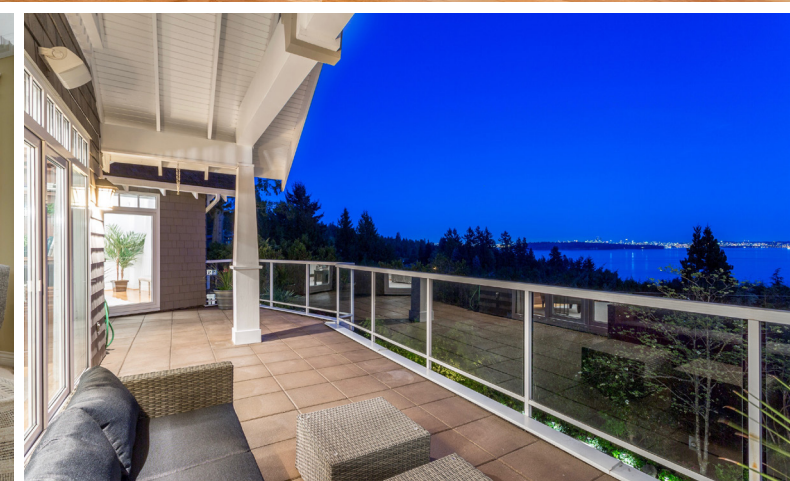
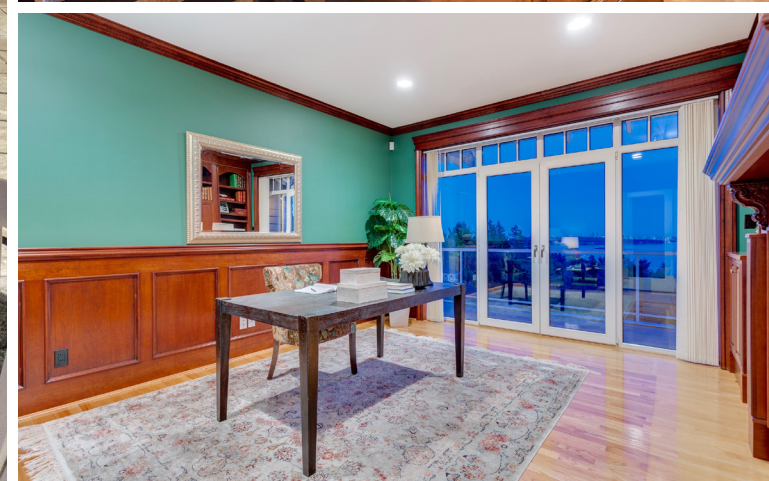
A luxurious custom residence offering approximately 5,064 sq.ft. of refined elegance on two sprawling levels featuring smashing ocean and city views! Exquisitely appointed with the finest quality, this spectacular home features a casual and warm ambience enhanced by an inviting foyer entry, dramatic entertainment areas and a spacious open floorplan.

Situated on a lush south-facing property in sought-after West Bay, this magnificent home showcases many exciting attributes including 5 spacious bedrooms and includes a breathtaking master with spa-like ensuite and large walk-in closet, a custom cherrywood kitchen with top-of-the-line stainless steel appliances, breakfast bar, adjoining eating area and large family room with built-in media centre and roaring fireplace.

Additionally, this home features spacious living and dining areas with vaulted ceilings, traditional fireplace, large picture windows perfect for entertaining, oak hardwood flooring and paneled accents through out, radiant in-floor heating, low E windows and solid core doors, a private office, exercise room, large recreation/games room with wet bar and 3-sided fireplace, media room, ample storage and 2-car garage.

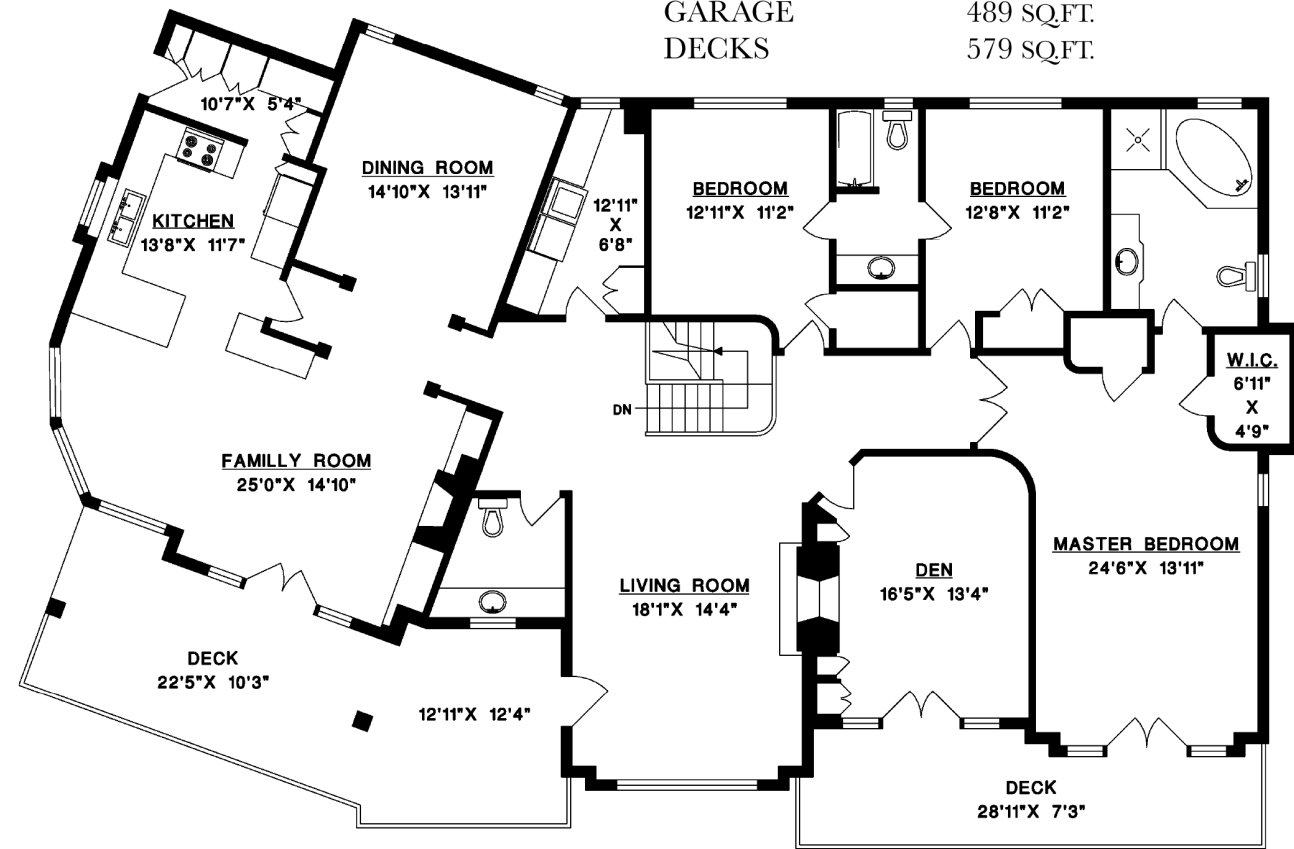
All rooms open out to manicured gardens, private sundrenched patios and an entertainment paradise including professionally designed and irrigated landscaping. This magnificent residence captures spectacular ocean views of Stanley Park and Vancouver's inner harbour, Point Grey and the West Side.

Walking distance to all local amenities including McKechnie Park, West Bay school and beaches, this sensational residence offers meticulous craftsmanship, impeccable quality and a practical layout with modern amenities making this the perfect family home!

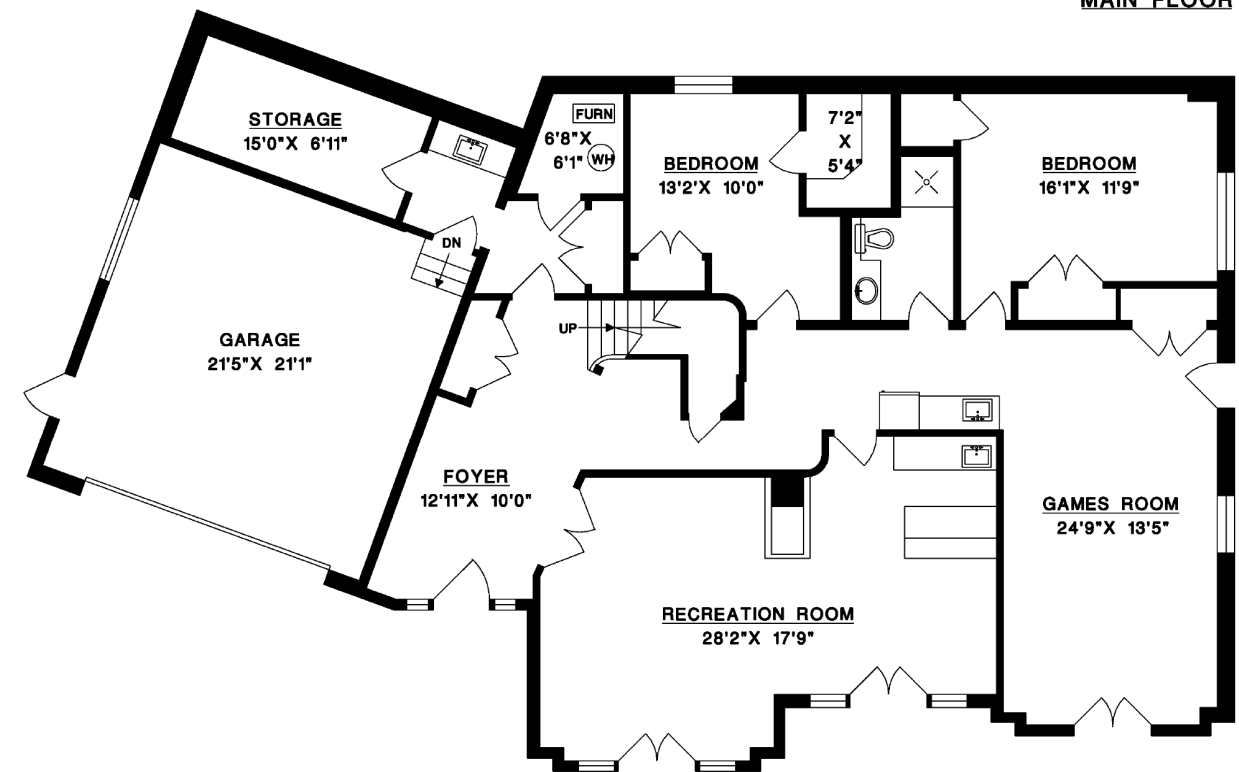


3395 THOMPSON CRESCENT
WEST VANCOUVER

MAIN FLOOR 2,872 SQ.FT.
 LOWER FLOOR 2,192 SQ.FT.
TOTAL 5,064 SQ.FT.
 GARAGE 489 SQ.FT.
 DECKS 579 SQ.FT.



MAIN FLOOR



LOWER FLOOR





JASON SOPROVICH

EXCELLENCE IN THE LUXURY HOME MARKET

604.817.8812

soprovich.com

ROYAL LEPAGE | **Sussex**

Jason Soprovich