

JASON SOPROVICH

EXCELLENCE IN THE LUXURY HOME MARKET



A LUXURIOUS CHARTWELL ESTATE WITH
SMASHING VIEWS & CARRIAGE HOUSE

1335 CAMBRIDGE ROAD, WEST VANCOUVER



A LUXURIOUS CHARTWELL ESTATE WITH SMASHING VIEWS & CARRIAGE HOUSE

A breathtaking ¼ acre gated estate situated in the heart of Chartwell offering spectacular ocean and city views! No expense was spared in the creation of this custom residence built by Linda Burger in 2008. The home offers a warm ambience with approximately 3,117 sq. ft. of luxurious living all on one level.

A double-height foyer leads to spacious formal living and dining rooms with high ceilings, roaring signature fireplace and mullioned-paned French and Eclipse doors, private den, beautiful custom built-ins and millwork throughout, marble flooring, magnificent crown moldings and baseboard detail. The main floor also consists of a breathtaking master suite with separate sitting area, spa-like ensuite and elegant wardrobe, spacious guest bedroom, 3 beautiful bathrooms and the ability to develop and finish a second level area as a secondary bedroom suite via a future spiral staircase.

The custom kitchen with top-of-the-line appliances, dry pantry, stunning cabinets and large centre island is perfect for entertaining. An adjacent eating area and family room with built-in media centre and traditional fireplace all open out to gated grounds and lush gardens surrounding a family's paradise complete with a 1,500 sq.ft. sundrenched patio, sparkling outdoor pool and bubbling hot tub.

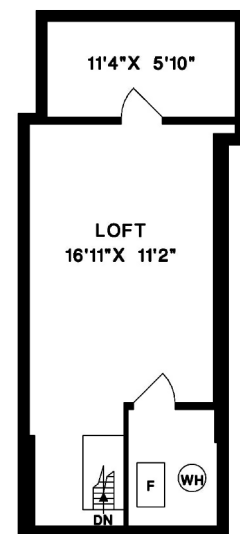
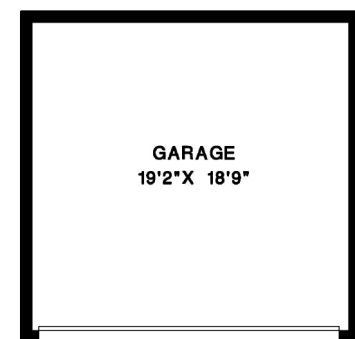
A meandering heated driveway leads to an incredible motor court and oversized 2-car garage with a self-contained 429 sq.ft. carriage home above offering privacy and separate access - perfect as a 3rd bedroom, private office or workshop.

Luxuriously appointed, this stunning residence boasts grandeur combined with elegance to offer the perfect entertainment lifestyle and casual ambience. Only minutes to Dundarave Village and Beach, this world-class residence is absolutely stunning and should not be missed!

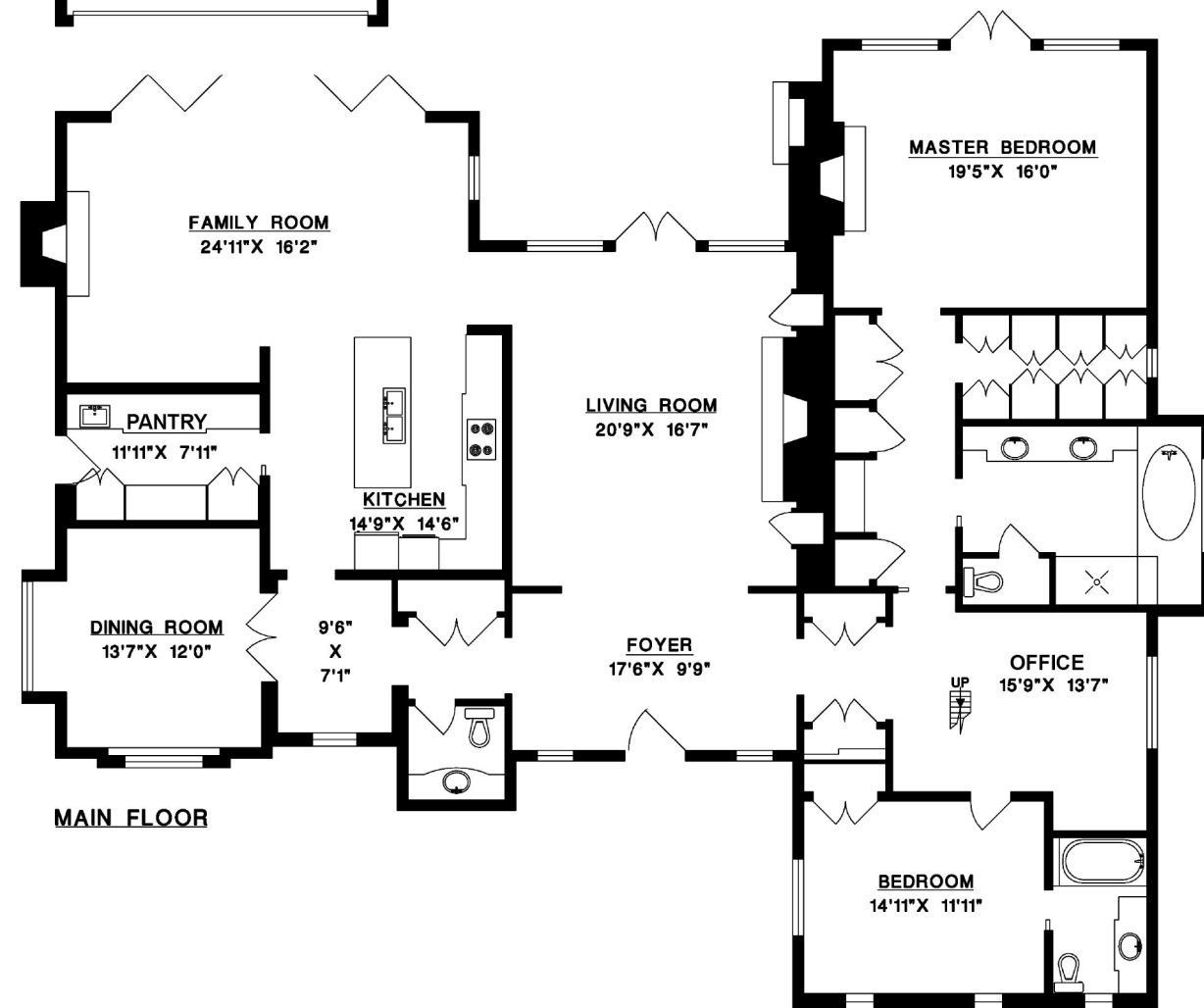


1335 CAMBRIDGE ROAD
WEST VANCOUVER

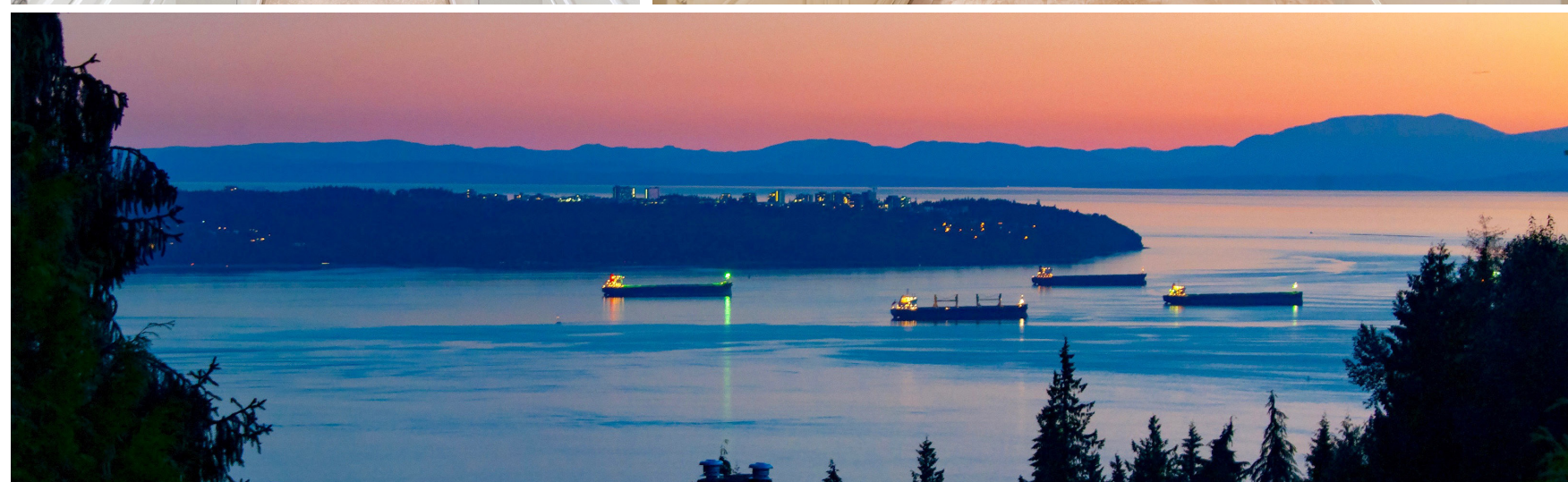
TOTAL 3,117 SQ.FT.
LOFT 410 SQ.FT.
WORKSHOP 429 SQ.FT.
GARAGE 414 SQ.FT.



UPPER FLOOR



MAIN FLOOR





JASON SOPROVICH

EXCELLENCE IN THE LUXURY HOME MARKET

604.817.8812

soprovich.com

ROYAL LEPAGE | **Sussex**

Jason Soprovich